

Specific Corona Rules (Hygiene Protocol)

Addition to the DMSB-approved Supplementary Regulations and the House Rules of Prokart Raceland Wackersdorf. (25/05/2021)

The Series Promoter (DMSW GmbH) and the organiser (ACV – Automobil-Club-Verkehr e.V.) of the Int. ACV Kart Race Wackersdorf are aware of their responsibility towards the athletes, teams, officials, staff and all institutions. In view of the worldwide spread of the new corona-/covid 19-virus, the following specific corona rules have therefore been issued on the basis of the recommendations of the Federal Government, the State Government of Bavaria, the Robert-Koch-Institute and in coordination with the German Olympic Sports Federation (DOSB) and the German Motor Sports Federation (DMSB); they apply in addition to the DMSB-approved Supplementary Regulations (visa number K-12266/21 of 04/05/2021) and the House Rules of Prokart Raceland Wackersdorf:

General:

- Paddock opening times: 06.30 hrs – 20.00 hrs
- In General persons will get access to the event location if they have showed the staff at the entrance a negative antigen rapid test (with certificate; tests carried out by yourself are not accepted) or a PCR test. The test results should be not older than 24 hrs.
- Persons who are vaccinated and/or recovered (by verification) are exempted from the Covid-19 compulsory test requirement by the local Infection Protection Ordinance
- By option the mobile Covid-19 test station at the entrance to the event location could be used
- Overnight stays in the paddock area are generally not permitted
- Distance control is additionally carried out with Distance Control Units (DCU) from the moment of accessing the event site (for a description of the functions, see Appendix 1)
- A person nominated by the series promoter is appointed as hygiene officer (with DMSB licence) and during the event present
Mr. Stefan Wagner, E-Mail: swagner@dmsb-event.de, Tel.: +49 171 5729133
- A person nominated by the organizer is appointed as hygiene officer and during the event present
Mrs. Jens Klingenberg, E-Mail: klingenberg@acv.de, Tel.: +49 173 2661000
- To monitor compliance with these specific Corona Rules, the organiser will employ additional security personnel in addition to its own staff
- Disinfection dispensers are installed at the access points to buildings and at crossing points

- Persons with acute respiratory symptoms and persons from risk areas according to the recommendations of the RKI are excluded from the event (a self disclosure must be signed)
- The maximum number of persons (drivers, teams, mechanics, parents etc.) permitted on the event site is always **600** and will be monitored and documented by the series promoter/organiser (online registration via DMSB-Portal is obligatory)
- The persons shall never stay in one place at the same time, they shall spread over the individual event areas (e.g. paddocks, race track, race control building, pre-start area, technical area, parc fermé, restaurant etc.)
- In general a maximum of 3 persons per team chef is allowed (registration is completed through the DMSB online portal – DKM Wackersdorf Ticket-Shop); the vouchers for the DKM Ticket-Shop will be provided after the event closing date
- A maximum of 3 persons per driver is permitted (registration is completed through the DMSB online portal – DKM Wackersdorf Ticket-Shop); the vouchers for the DKM Ticket-Shop will be provided after the event closing date
- Only registered persons (with personal ticket) will be granted access to the event site
- The minimum distance of 1.5m must be maintained as far as possible on the entire event site (indoor and outdoor areas) by all persons present (this applies also to the team tents in the paddocks)
- A medical facial mask covering nose and mouth (Standard: OP, KN95 or FFP2) is mandatory and must be worn by all persons at all times during their stay in the event area (indoor and outdoor area) (this also applies to the team tents in the paddocks)
- Only persons who are absolutely essential for the running of the event or for the support of the participants during their racing activities and who have demonstrated this towards the organiser (registration is completed through the DMSB online portal) are allowed to enter the event area
- In order to avoid crowds of people, no monitors/TV sets for the transmission of lap times/results will be installed on the entire event site
- The pre-event briefings of the organisation are usually held via online meetings so that personal contact can be avoided as far as possible

Race Control Building (Race Office):

- Access to the race office container is generally forbidden for drivers/teams
- Communication with the race office is possible at any time by e-mail or telephone or through the window next to the former official notice board
 - o E-mail race office: klingsberg@acv.de

- Phone race office: +49 173 2661000
- Admission to the race control area (e.g. container stewards/race office) is only possible after clearance by the security personnel on duty at the entrance
- Official documents will only be posted digital in the DMSB online portal

Administrative Checks:

- All drivers/teams must fill in the entry forms (registration/guest starter) completely (including all signatures) and send the documents before the event by traditional mail to the DKM entry office (Gaby Meitzner). In principle, no registrations/entry forms will be accepted on site
- The entry fee (registration/guest starter) must be paid in advance by bank transfer, on-site payment is not possible
- Administrative checks will be carried out exclusively by classes according to the given schedule (avoid queues and respect minimum distances!)
- Administrative checks and the delivery of documents will take place at the window of the race office container (no admission to the race office!)
- The drivers will receive the following documents at administrative checks:
 - general event information
 - digital drivers briefing
 - armband (1 x driver / 1 x mechanic)
 - transponder (plus suitable support if required)
 - 1 bin liner
- Each driver must bring his/her own pen for the signatures to be provided

Drivers Briefing:

- The necessary information of the digital drivers briefing will be made available to the drivers/competitors in advance in digital form

Scrutineering:

- During scrutineering, the scrutineers will wear protective gloves if they have to touch the safety equipment or vehicle parts of a competition vehicle
- To avoid long gathering of people, scrutineering will take place in a condensed form
- Scrutineering will take place in classes according to the given schedule

- The materialpass must be filled out carefully and legibly by the participant and brought to scrutineering
- Each driver must present at scrutineering a kart ready for racing, max. 2 engines and the helmet (it is not required to present the second kart / chassis)
- With his registration/entry, the driver confirms that the kart used and the driver equipment comply with the current regulations
- The scrutineers reserve the right to carry out spot checks and controls during the entire duration of the event

Delivery of tyres/fuel:

- The distribution of tyres and fuel takes place outdoors, strictly in classes and according to a given timetable
- In order to avoid any crowding of people as far as possible, the delivery times must be strictly observed

Pre-start area/Start-Service-Parc:

- The maximum of 1 driver and 1 mechanic per participant (start number) will be admitted
- A medical face mask (Standard: OP, KN95 or FFP2) covering nose and mouth is mandatory (for drivers, a balaclava is also considered as a face mask)
- The replacement karts must be removed from the start service park by the mechanic before the end of the respective session
- The "one-way traffic system" as signposted must be observed

Parc-Fermé:

- For all participants, the entire paddock is considered as parc fermé for the period of time specified in the Supplementary Regulations to avoid crowding of people
- The scrutineers will carry out the final controls on a spot check basis and in compliance with the hygiene protocol
- The "one-way traffic system" as signposted must be observed

Prizegiving:

- The contactless presentation of awards will take place immediately after the races in the closed-off area at the race control building

- The cups will not be handed over personally, but they will be available on the winners' podium
- Any contact must be avoided (no hugs, no shaking of hands etc.)
- During the ceremony, the drivers must wear a face mask; alternatively, plexiglass walls can be placed between the classified riders
- For the winner interviews, a separate and closed-off area where minimum distances must be observed will be available

Interview Area:

- A separate and delimited outdoor area
- The interviews will take place exclusively between 2 persons (e.g. interviewer and driver)
- A microphone with protective cover is used for each person
- The microphones will be disinfected after each interview
- The protective covers will be changed after each interview

Hygiene partition screens:

- Workplaces with a distance of less than 1.5 from each other will be separated by a partition screen (see Appendix 2.1)
- Workplaces which are situated opposite one another will be separated by a partition screen (see Appendix 2.2)
- The workplace/meeting room of the stewards will be set up in such a way that hearing units will be set up with partition screens (see Appendix 2.3)

Appendices

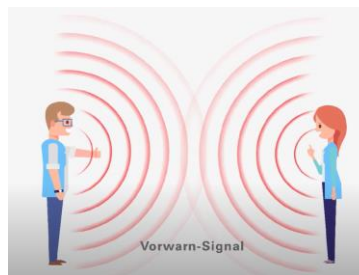
Appendix 1 – Function of the distance control with the aid of safedi distance control units (DCU):

- Checking of the minimum distance of 1.5 m by the DCU
- Cloud-based close contact diary for the determination of infection chains
- Central delivery of DCUs at the entry point (access to the event site)
- Central return and cleaning/disinfecting/reading of the DCU at the exit point (exit of the event area)
- Each person registered in advance on the DMSB online portal will be assigned/ delivered a DCU upon entering the event site
- This DCU must be permanently worn on the entire event site and may not be taken off
- The DCU detects/registers when people get too close to one another and the minimum distance of 1.5 m is not maintained and gives a visual and acoustic warning
- If the minimum distance is disregarded too often, the collective can be informed accordingly
- In the event of an infection, the hygiene officer can trace close contacts between an infected person and other people and thus identify potential groups of people and exclude them from the event site

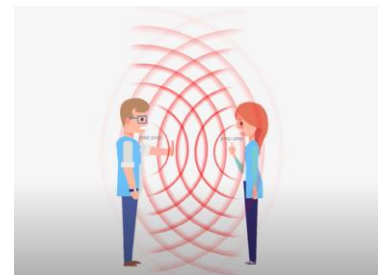
Sicherheitsabstand ist ok
Akustisches Signal - keins
Visuelles Signal – blinkt grün



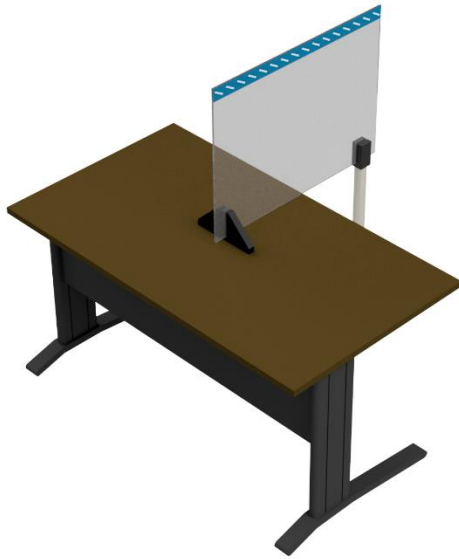
Abstand im Grenzbereich
Akustisches Signal – einmalig
Visuelles Signal – blinkt rot



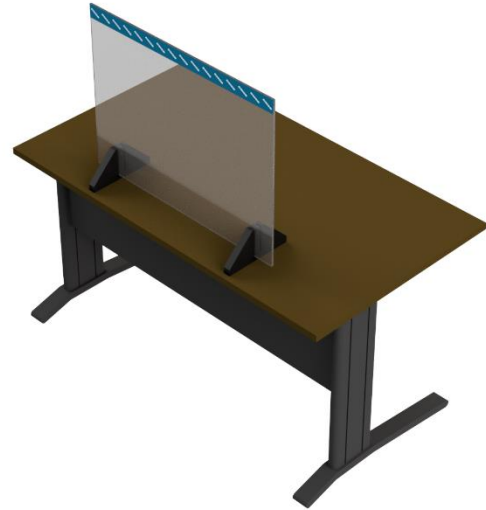
1,5 m wird unterschritten
Akustisches Signal – permanent
Visuelles Signal – blinkt rot



Appendix 2.1 – Hygiene protective screen



Appendix 2.2 - Hygiene-protective screen



Appendix 2.3 – Hygiene protective screen

